



WAS \$1,374,000

**NOW**  
**\$1,324,000\***



ASPIRE.  
MORE  
FOR LESS

UP TO  
**\$65k**  
OF VALUE



LEARN MORE

ASPIRE RANGE FOR A LIMITED TIME ONLY

HOME SIZE **249.4m<sup>2</sup>** | LAND SIZE **309m<sup>2</sup>**

House and Land Package

Lot 26 Brookside High Grove, Box Hill, High Grove, Box Hill

### UPGRADES INCLUDED

#### → **Aspire Inclusions**

- Blinds to the home
- Coloured Render to Trims of Façade
- Ducted Air
- 20mm Stone Benchtops to Kitchen
- 900mm wide Smeg Appliances
- Smeg Freestanding Dishwasher
- Smeg Microwave
- Floor Coverings throughout
- Remote Control for garage
- Soft close drawers to kitchen
- 2450mm Ceiling Heights
- Hybrid Framing
- Current Promotion Included
- Fixed Site Cost
- Driveways, Landscaping and Fencing
- Smart Solar System

Thomas Williamson | [TWilliamson@cpgestates.com.au](mailto:TWilliamson@cpgestates.com.au) |

\*Terms and conditions apply: Images are provided for illustrative purposes only. Additional charges may apply where designs or facades are modified and/or floorplan options added. Land value included in the package. Clarendon Homes reserves the right to change the price without notice. Only applies to home built in NSW. E&OE. Clarendon Homes (NSW) Pty Ltd. ABN 18 003 892 706 BL 22 98 C.

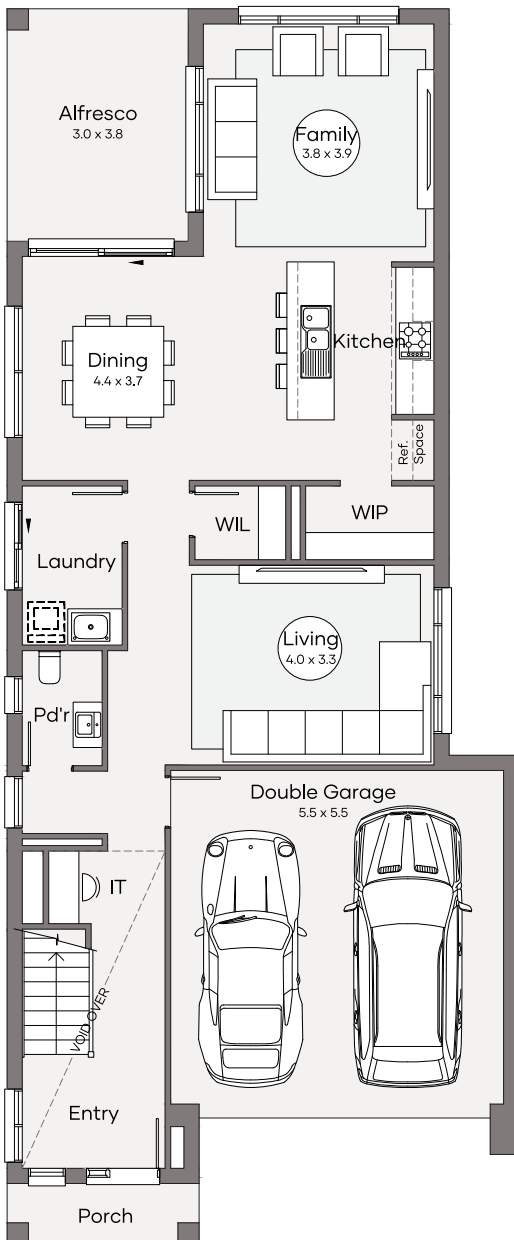
# WATERFORD 27 AXIS FACADE

Lot 26 Brookside High Grove, Box Hill, High Grove, Box Hill

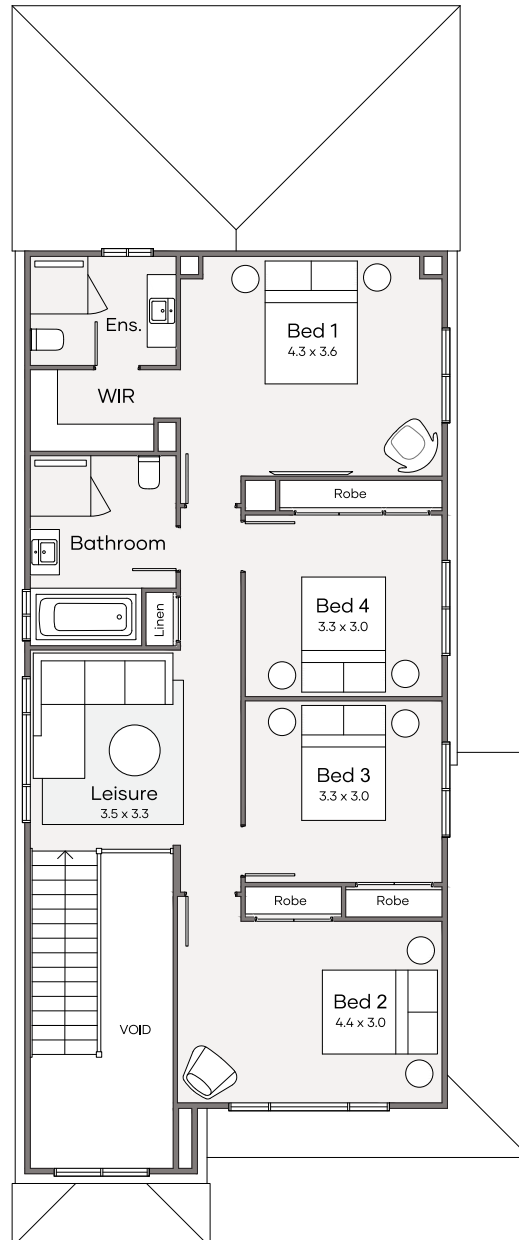
Clarendon  
Homes

HOME SIZE 249.4m<sup>2</sup> | LAND SIZE 309m<sup>2</sup>

4  | 3  | 2.5  | 2 



GROUND FLOOR



FIRST FLOOR

**Note: Please speak to a Sales Consultant to see this house design sited on the block.**

Thomas Williamson | [TWilliamson@cpgestates.com.au](mailto:TWilliamson@cpgestates.com.au) |

\*Terms and conditions apply: Images are provided for illustrative purposes only. Additional charges may apply where designs or facades are modified and/or floorplan options added. Land value included in the package. Clarendon Homes reserves the right to change the price without notice. Only applies to home built in NSW. E&OE. Clarendon Homes (NSW) Pty Ltd. ABN 18 003 892 706 BL 22 98 C.

ABN 18 003 892 706 BL 22 98 C. Date/Time: 16/5/2025 14:05