



WAS \$1,310,000

NOW
\$1,260,000*



ASPIRE.
MORE
FOR LESS

UP TO
\$65k
OF VALUE



LEARN MORE

ASPIRE RANGE FOR A LIMITED TIME ONLY

HOME SIZE **227m²** | LAND SIZE **301m²**

House and Land Package

Lot 1009 Alma Place, Oakville, Alma Place, Oakville

UPGRADES INCLUDED

→ Aspire Inclusions

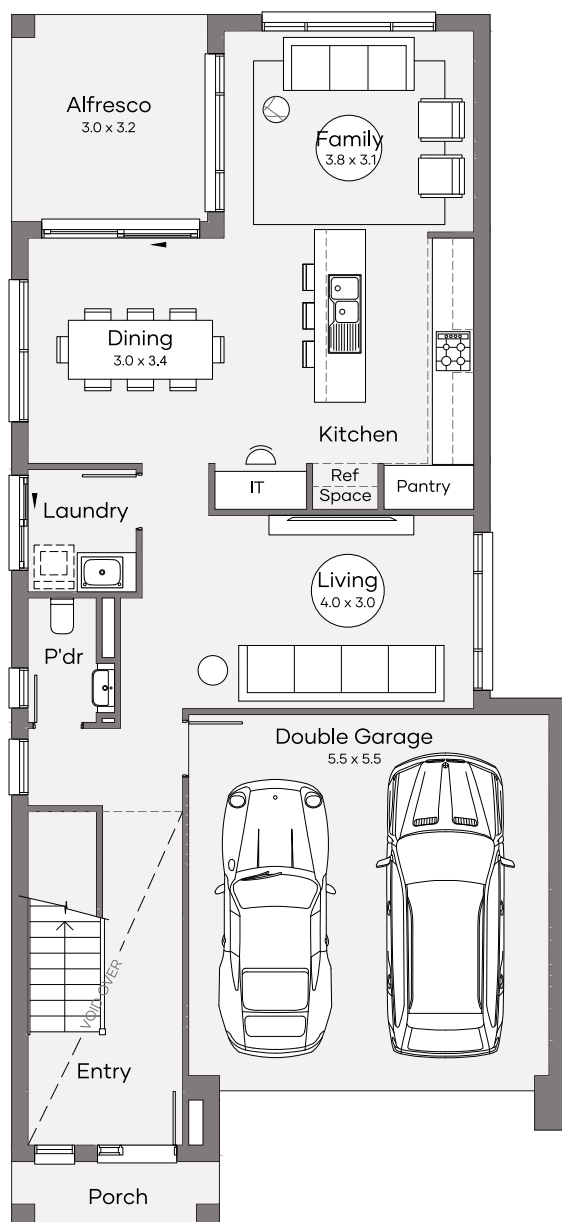
- Blinds to the home
- Coloured Render to Trims of Façade
- Ducted Air
- 20mm Stone Benchtops to Kitchen
- 900mm wide Smeg Appliances
- Smeg Freestanding Dishwasher
- Smeg Microwave
- Floor Coverings throughout
- Remote Control for garage
- Soft close drawers to kitchen
- 2450mm Ceiling Heights
- Hybrid Framing
- Current Promotion Included
- Fixed Site Cost
- Driveways, Landscaping and Fencing
- Smart Solar System

Thomas Williamson | TWilliamson@cpgestates.com.au |

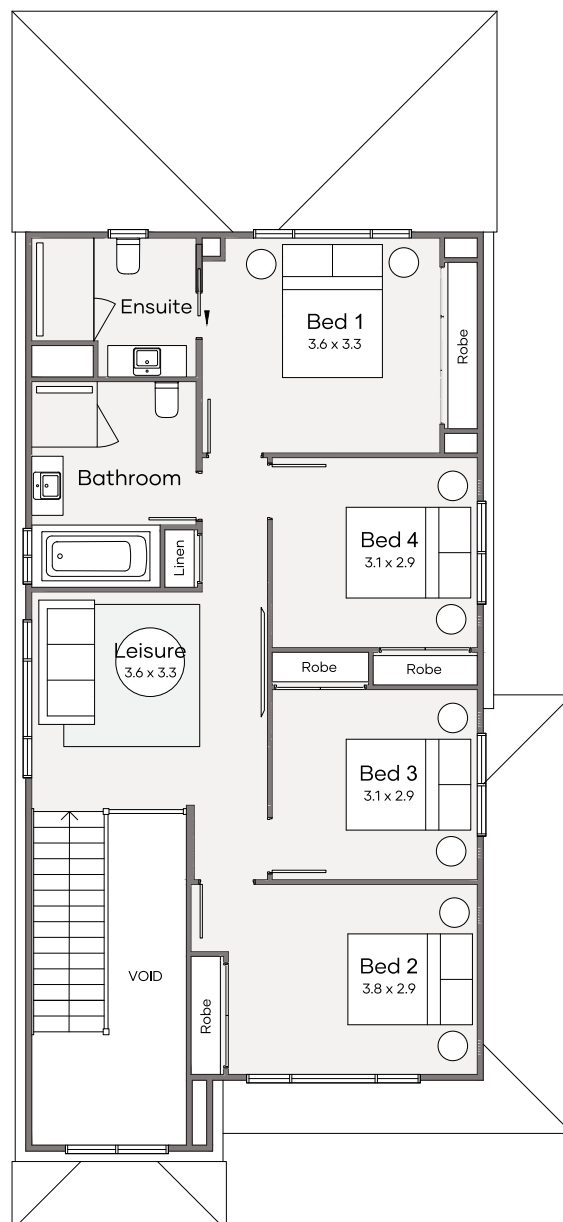
*Terms and conditions apply: Images are provided for illustrative purposes only. Additional charges may apply where designs or facades are modified and/or floorplan options added. Land value included in the package. Clarendon Homes reserves the right to change the price without notice. Only applies to home built in NSW. E&OE. Clarendon Homes (NSW) Pty Ltd. ABN 18 003 892 706 BL 22 98 C.

HOME SIZE 227m² | LAND SIZE 301m²

4  | 3  | 2.5  | 2 



GROUND FLOOR



FIRST FLOOR

Note: Please speak to a Sales Consultant to see this house design sited on the block.

Thomas Williamson | TWilliamson@cpgestates.com.au |

*Terms and conditions apply: Images are provided for illustrative purposes only. Additional charges may apply where designs or facades are modified and/or floorplan options added. Land value included in the package. Clarendon Homes reserves the right to change the price without notice. Only applies to home built in NSW. E&OE. Clarendon Homes (NSW) Pty Ltd. ABN 18 003 892 706 BL 22 98 C.